

AirLine PX which are pixel controllable linear LED luminaires, perform gorgeous visual effects on facade applications. Airline family is designed to operate hassle-free for many years under harsh environmental conditions.

Works in full compatibility with DMX512/RDM standards. With high speed data transmission feature, Airline PX enable smooth visuals and video graphic animations on any facade.

Options



RGB

Red Green
Blue

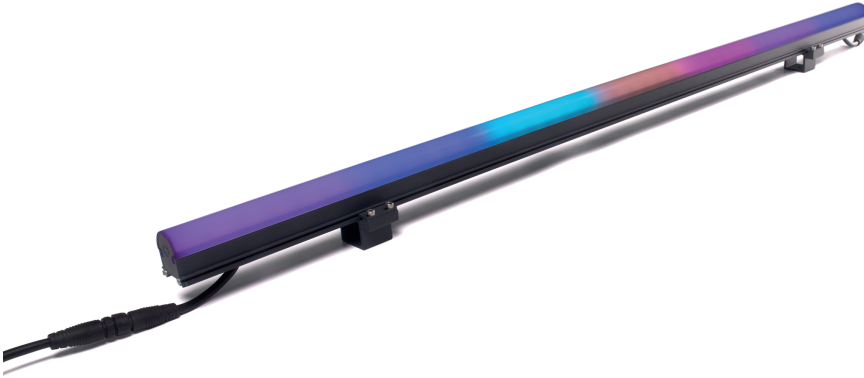


RGBW

Red Green
Blue White

Control

External DMX512



General Specifications

- With its aluminum **extrusion body and UV-resistant diffuser**, it is designed to operate smoothly for many years under harsh environmental conditions.
- They provide visual harmony to architectural structures with **body color options**.
- With **IP67** protection class feature, they work flawlessly under harsh weather conditions.
- Due to external **DMX512** protocol support, it provides full compatibility with external control software such as **Madrix 5, ENTTEC ELM**.
- Luminaire sequential control can be achieved by **3XDMX** support for **510 pixel** with RGB systems and **384 pixel** with RGBW systems



Technical Specifications

/ General

| | |
|-------------|-----------------|
| Pixel Pitch | 150mm |
| Control | External DMX512 |
| Color Depth | 16,7 Million |

/ Physical

| | |
|---------------------|---------------------|
| Size | (A*) x 39mm x 29mm |
| Body | Aluminium Extrusion |
| Connections | IP67 Connector |
| Working Temperature | -25°C ~ +50°C |
| Protection Class | IP67 |

* Product lengths may vary. For details, see the technical drawing section.

/ Optical

| | |
|---------------|----------|
| Luminous Flux | 560lm/m* |
| Viewing Angle | 140° |

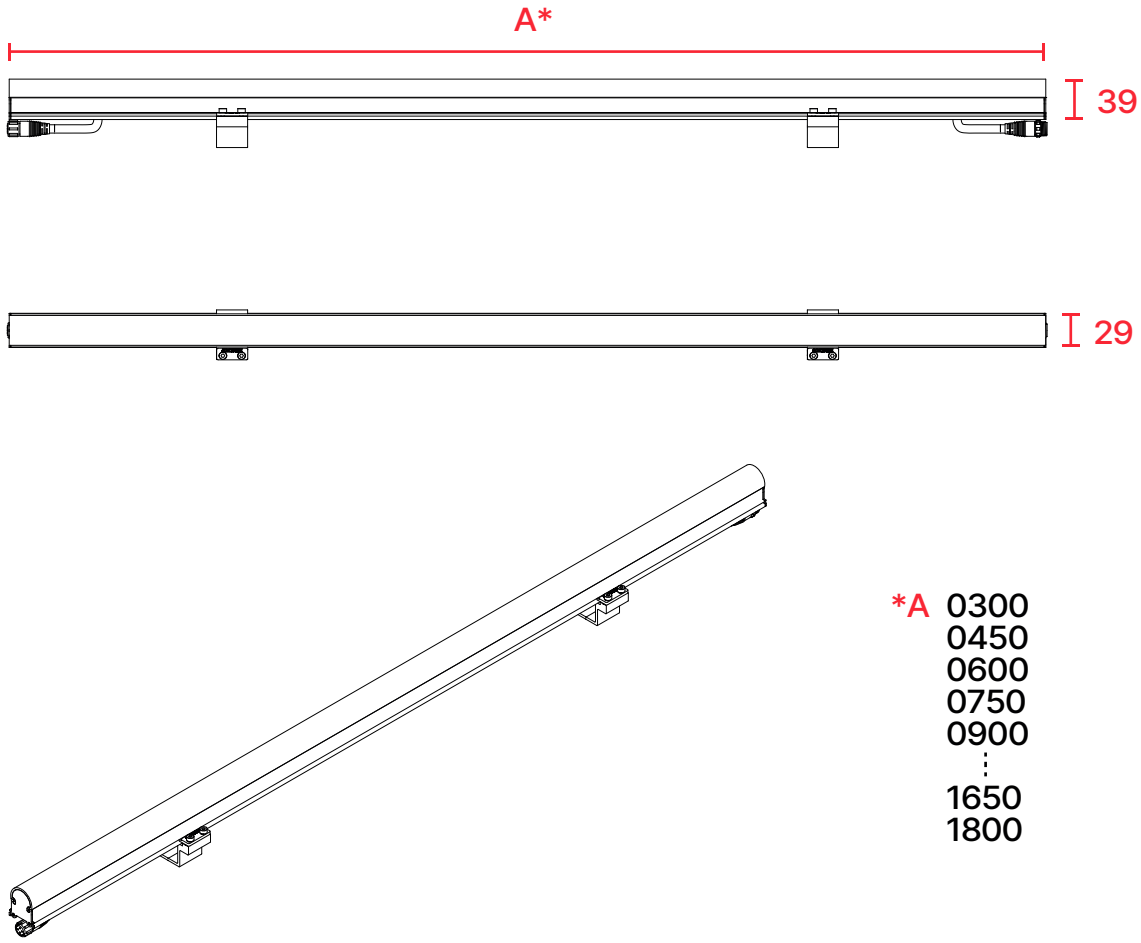
* Lumen value is given when all LEDs are at full power.

/ Electrical

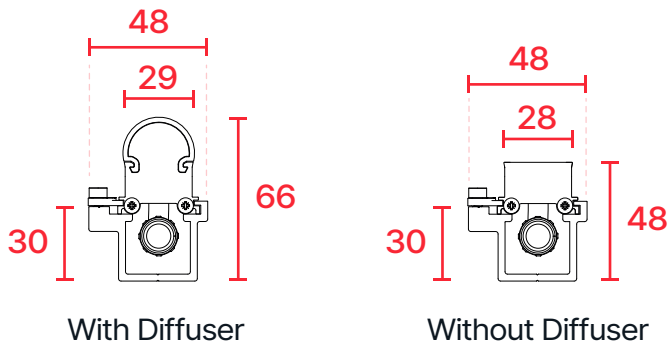
| | |
|-------------------|--------|
| Power | 12W/m* |
| Operating Voltage | 24VDC |

* Power consumption may vary with product length and pixel structure.

Technical Drawing



Options



All dimensions are in millimeters

Accessories

Connection Accessories



Extension cable

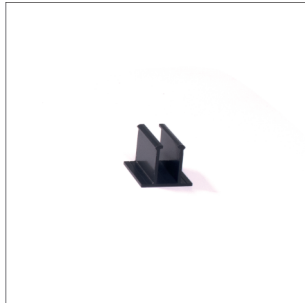


Input cable

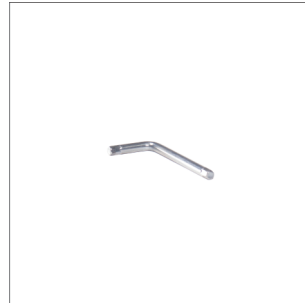
Mounting Accessories



Standard Mounting Bracket



U Type Mounting Bracket



M4 Allen Key

Connection Diagram

