

LiPie PX which are pixel controllable dot LED luminaires, perform gorgeous visual effects on facade applications. Dot family is designed to operate hassle-free for many years under harsh environmental conditions.

Flexible and customizable form allows installation for any type of surface.

Works in full compatibility with DMX512/RDM standards. With high speed data transmission feature, LiPie PX enable smooth visuals and video graphic animations on any facade.

Options



RGB

Red Green
Blue

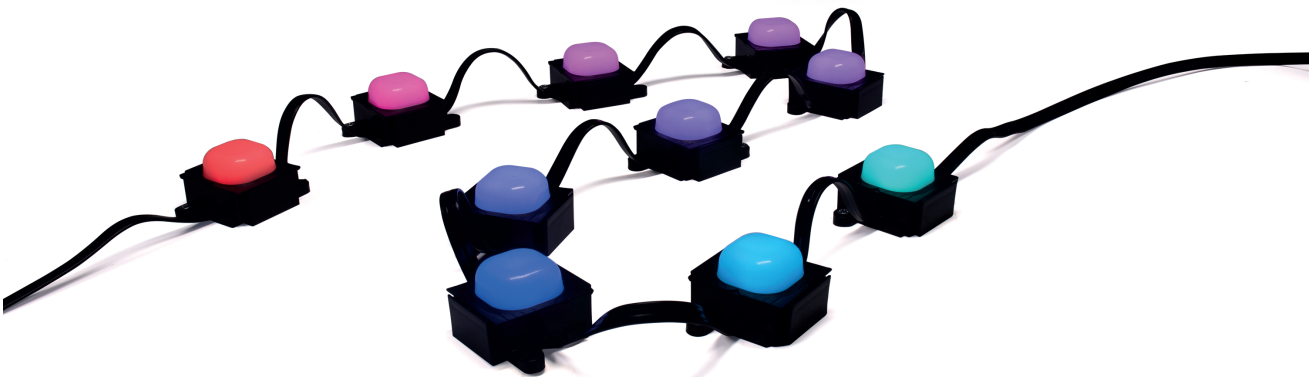


RGBW

Red Green
Blue White

Control

External DMX512



General Specifications

- With its **UV-resistant PC body**, it is designed to operate smoothly for many years under harsh environmental conditions.
- They provide visual harmony to architectural structures with **cable and fixture color options**.
- With **IP67** protection class feature, they work flawlessly under harsh weather conditions.
- Due to external **DMX512** protocol support, it provides full compatibility with external control software such as **Madrix 5, ENTTEC ELM**.
- Luminaire sequential control can be achieved by **3XDMX** support for **510 pixel** with RGB systems and with RGBW systems



Technical Specifications

General

Pixel Pitch	75mm~500mm*
Control	External DMX512
Color Depth	16,7 Milyon

* Cable distance between products may vary.

Physical

Size	50mm x 42mm x 33mm
Body	Polycarbonate
Connections	Flat Cable
Working Temperature	-25°C ~ +50°C
Protection Class	IP67

Optical

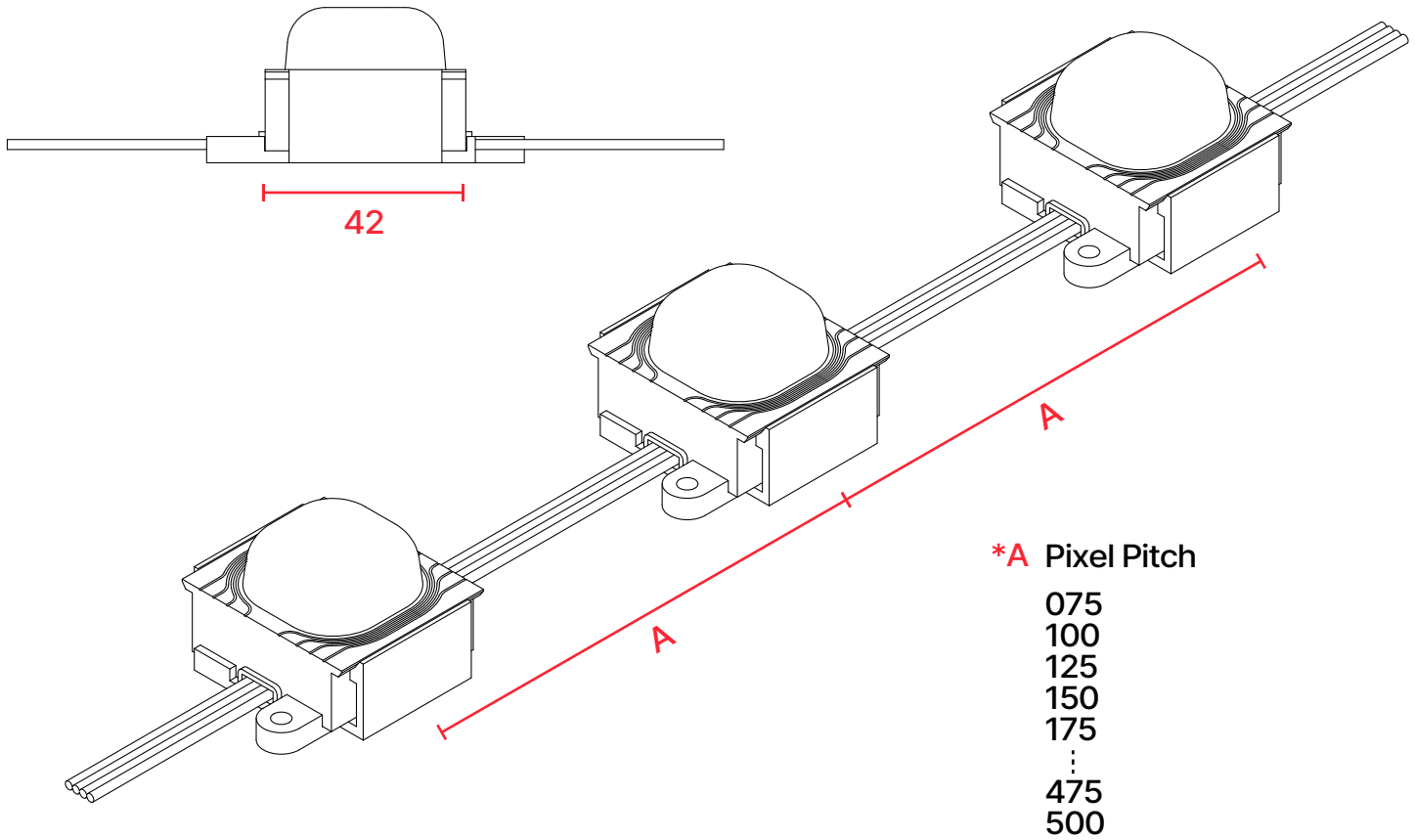
Luminous Flux	70lm/px*
Viewing Angle	140°

* Lumen value is given when all LEDs are at full power.

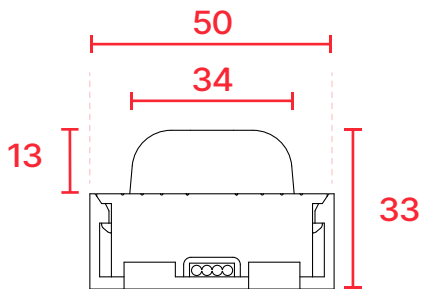
Electrical

Power	1,4W/px
Operating Voltage	24VDC

Technical Drawing



Sizes



All dimensions are in millimeters

Accessories

Connection Accessories

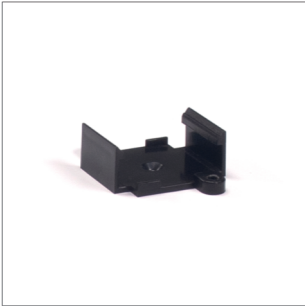


Extension cable



Input cable

Mounting Accessories



Standard Mounting Bracket



M4 Allen Key

Connection Diagram

